

# Telpo

## TPS300

Linux EFT POS



### Features



Linux



Magstripe



Smartcard



NFC



WCDMA



Printer

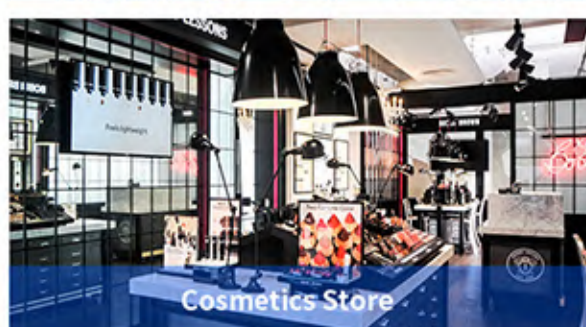


Ethernet

## TPS300

Linux EFT POS

### Application



### Description

OS	Linux
Processor	ARM11
Memory	64MB RAM, 128MB Flash
Display	2.8-inch Black/White,128*64 Color,320*240(Optional)
Keypad	11 alphanumeric keys, 8 function keys
Thermal Printer	Paper width: 58mm, Φ35mm
Magnetic Card Reader	Track 1/2/3, bi-directional swipe, ISO7810, ISO7811, ISO7812
Smart Card Reader	ISO7816
Contactless Card Reader (Optional)	ISO14443 Type A, Mifare
SAM Slots (Optional)	2 SAMs
SIM Slots	1 SIM 2 SIMs (Optional)
Communications	GPRS/Ethernet WCDMA(Optional)
Peripheral Ports	1 Mini USB (OTG), 1 Micro USB (RS232), 1USB External antenna (Optional)
Audio	Buzzer single tone beeper
Power Supply	12V/2A
Battery	7.4V/2200mAh, Li-ion
Dimensions (mm)	197 (L)*87 (W)*62 (H)
Environmental	Operating temperature: -5°C ~ 45°C Storage temperature: -25°C ~ 60°C
Certification	EMV 4.2 L1/L2, PCI 3.0, CE

Note: Reserve the right to change the parameters without prior notice.

**Telepower communication Co.,Ltd.**

www.telpo.com.cn

Tel:+86-757-86227898

E-mail:business@telpo.com

Add:Foshan City,Guangdong Province,China

