



C68

Integrated Cash Register

Features



Android



Telpo Cloud



Dual Screen



Printer



Keyboard



Cash Drawer



Barcode



Ethernet



Supermarket



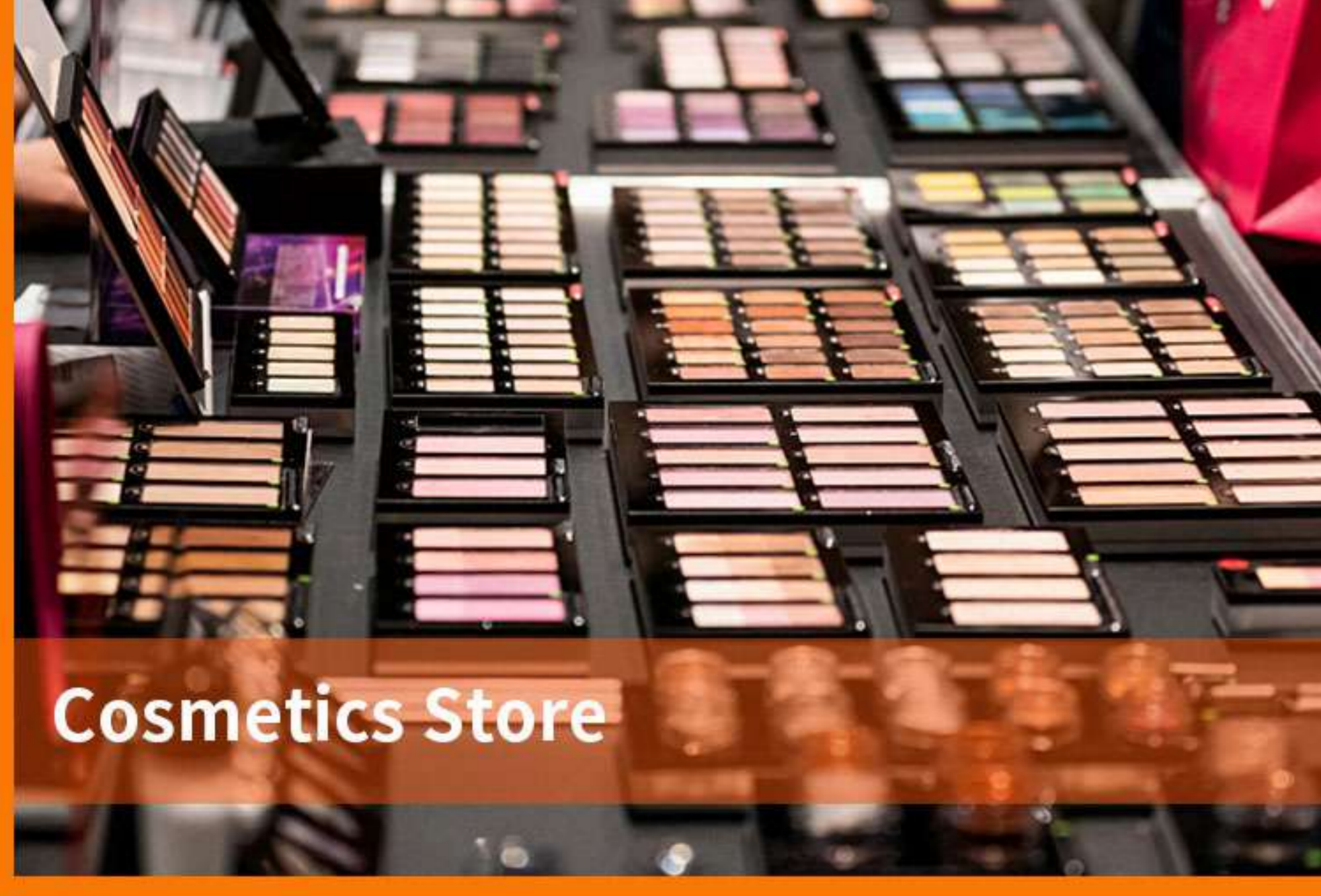
Clothes Store



Shopping Mall



Fruit Shop



Cosmetics Store



Hotels

C68

Integrated Cash Register

Specification

| | |
|----------------------------|--|
| OS | Android 7.1 |
| Process | Quad-Core 1.6GHz |
| Memory | 2GB DDR, 8GB eMMC, Ext. TF card slot |
| Display | Main Display: 15.6-inch, 1920*1080 Customer Display: 15.6-inch, 1920*1080 |
| Keyboard(Optional) | Support |
| Cashbox(Optional) | Support |
| Barcode Scanner (Optional) | Large Window Handhold Scanner(Optional) |
| Thermal Printer (Optional) | Paper width 80mm, Φ80mm, with auto cutter Printing speed: 250mm/s |
| Camera | Single-lens Camera (Optional) Dual-lens Camera (Optional) 3D Depth Sensing Camera (Optional) |
| Communications | WiFi/Bluetooth/Ethernet |
| Peripheral Ports | 4 USB, 1 micro USB, 1 RJ11, 1 RJ45, 1 audio jack |
| Power Supply | 12V/3A |
| Others | 1 Power Key |
| Environmental | Operating temperature: -5°C ~ 45°C Storage temperature: -25°C ~ 60°C |
| MDM (Optional) | Mobile Device Management |

Note: Reserve the right to change the parameters without prior notice.

Component(Optional)



Dual Screen



Printer



Barcode Scanning Gun



Keyboard



Cash Drawer

Barcode Scanner

Telepower Communication Co.,Ltd.

www.telpo.com.cn

Tel:+86-757-86227898

E-mail:business@telpo.com

Add:Foshan City,Guangdong Province,China



© Copyright 2021 Telepower Communication Co., Ltd. All Rights Reserved.